

INTEOS[®] - Clavicle System 3.5

Innovative fixed-angle polyaxial Clavicle System





Advantages of the INTEOS® Clavicle Plate 3.5

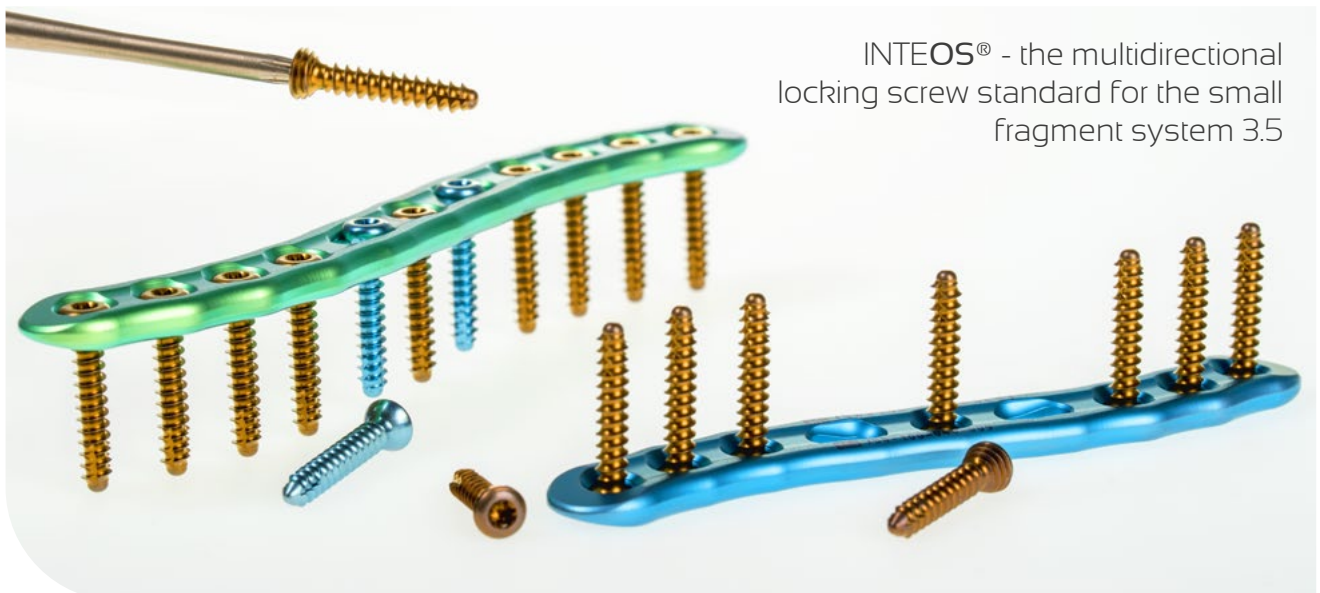
The INTEOS® Clavicle plate showcases the latest findings in the repositioning and stabilising of fractured clavicles, based on the tried-and-tested **fixed-angle & polyaxial** plate-screw-connection from Hofer Medical Solutions.

Product features

- the plate design and geometry are built on over 100 precisely measured clavicles
- precise anatomical plate prototype for best results
- fixed-angle and polyaxial holes for optimized screw placement
- optional minimally invasive aiming device available
- minimized screw head protrusion in order to avoid irritation

Screw features

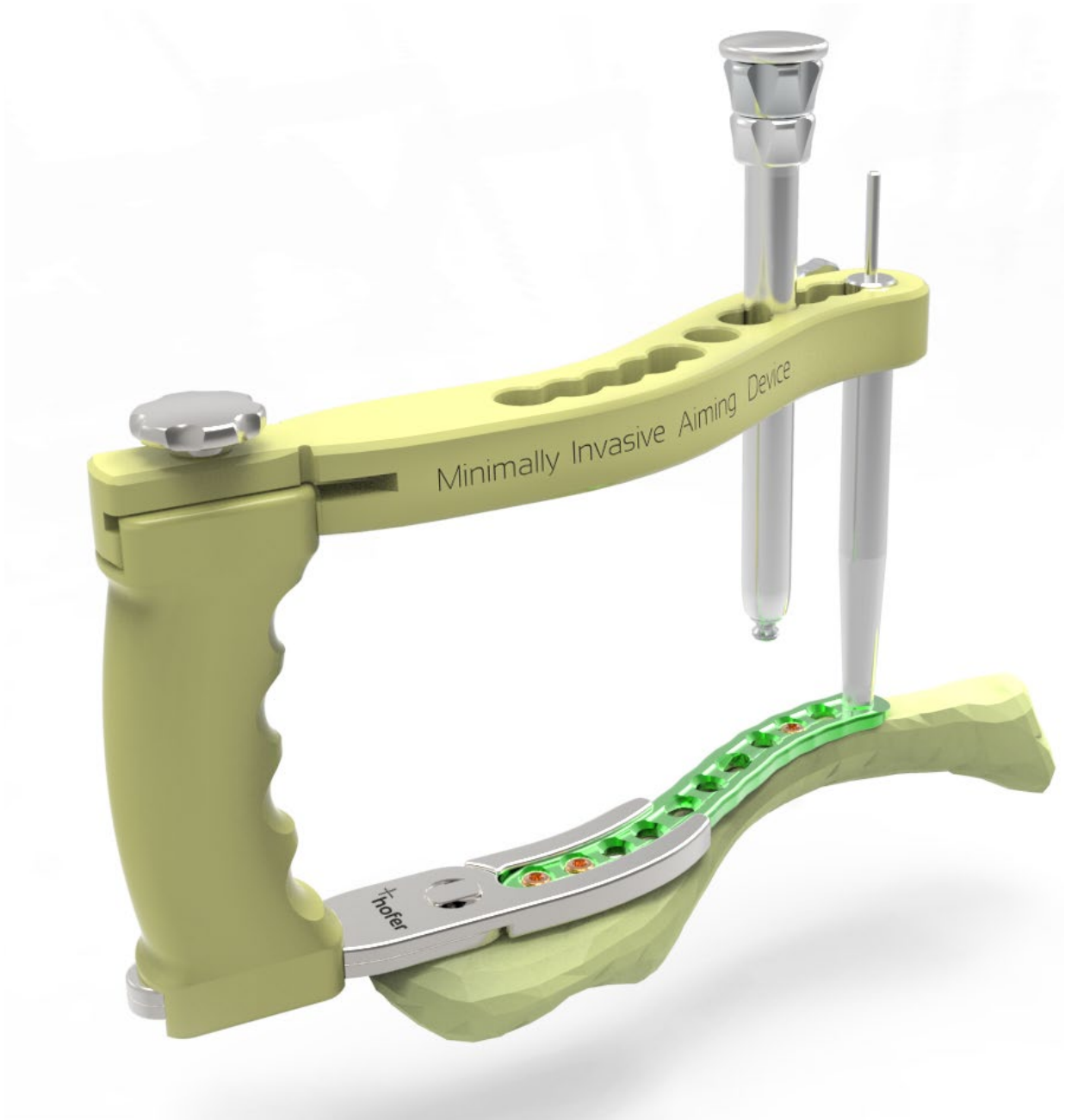
- compatible INTEOS® 3.5 mm locking screw
- Multi-directional, rounded screw head with locking function (fixed-angle & polyaxial)
- non-invasive screw tip
- „stick fit” - the stable INTEOS® connection between screw and screwdriver blade
- ForceDrive No 10 - screwdriver technology





hofer

MEDICAL SOLUTIONS





AUSTRIA

HOFER GMBH & CO KG
Jahnstrasse 10-12
A 8280 Fürstenfeld
TEL: +43(0)3382/53388
FAX: +43(0)3382/53093
office@hofer-medical.com
www.hofer-medical.com
FN21826y
UID ATU30764704



GERMANY

HOFER-MEDICAL GMBH
Ruhrtalstraße 52-60
D 45239 Essen
TEL: 0800-700 80 22 (innerhalb BRD)
FAX: +49 201 56599 1069
office@hofer-medical.de
www.hofer-medical.com
HRB24645
UID DE290596924



ITALY

HOFER MEDICAL ITALIA S.R.L.
Via della Rena, 26
I - 39100 Bolzano

Tel: +39 393 8950481
FAX: +39 06 81151148
office@hofer-medical.it
www.hofer-medical.com
RM-1454597
UID IT13534721009



POLAND

HOFER GMBH & CO KG SPÓŁKA
KOMANDYTOWA ODDZIAŁ W POLSCE
Radkowska 9
PL 57-402 Nowa Ruda

Tel.Kom.:+48603224112
Fax: +48 748712273
office@hofer-medical.pl
www.hofer-medical.com
REGON 141527293
UID PL1070011771

creating partnership

For us, a partnership is the result of a long and happy relationship in all areas of our work. Reliable bone healing for patients, optimal handling of the systems for surgeons and surgical personnel, as well as the simple preparation of the instruments, constantly strengthen this partnership.

For us, "creating" means more than just finding solutions in the form of innovative products.

It is the result of high standards, constant development, innovative products and excellent service for patients, surgeons and surgical personnel around the clock.

Please do not hesitate to contact us if you have questions about our company, our employees or our production methods.

Your Hofer Medical SolutionsTeam

vCard

