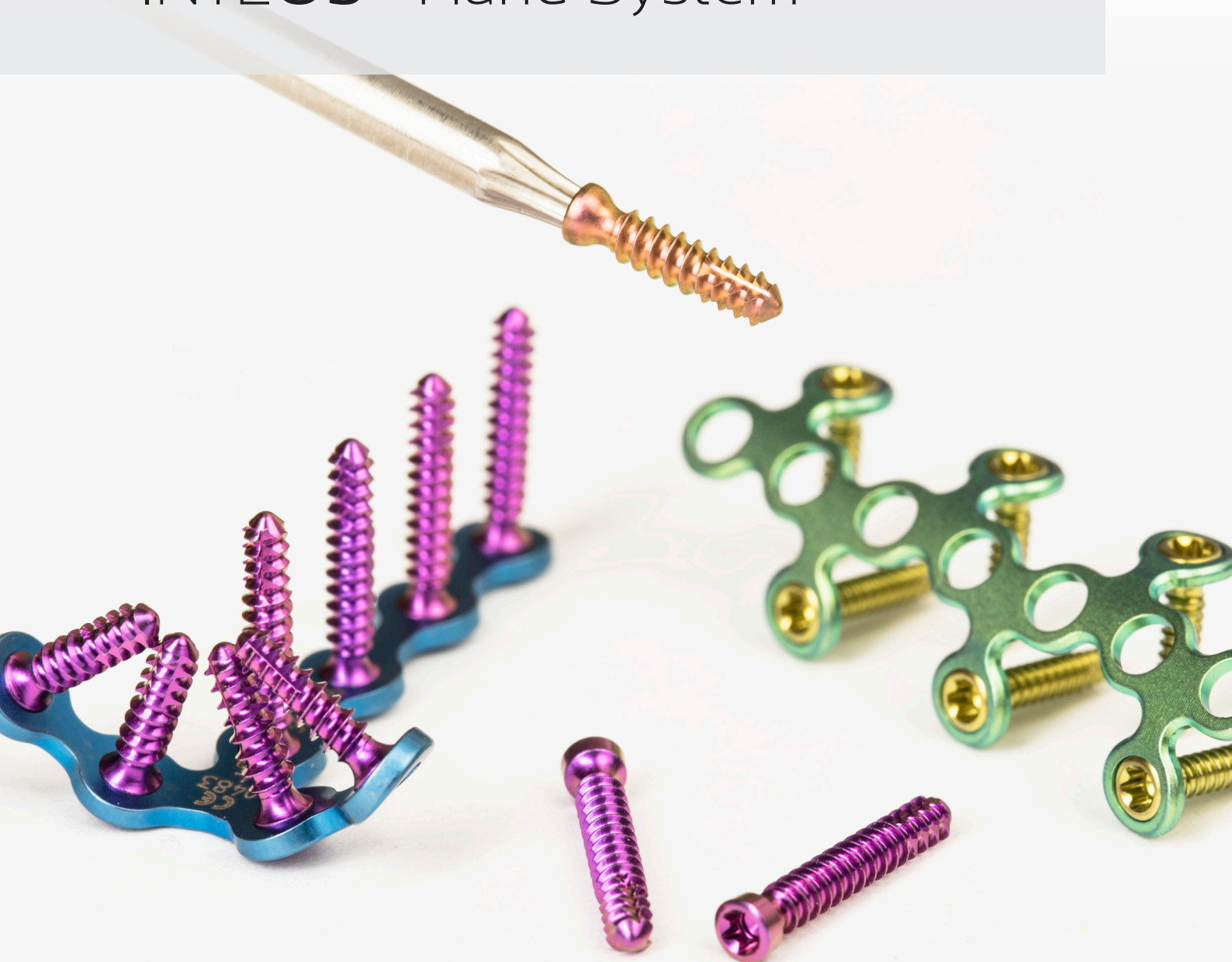
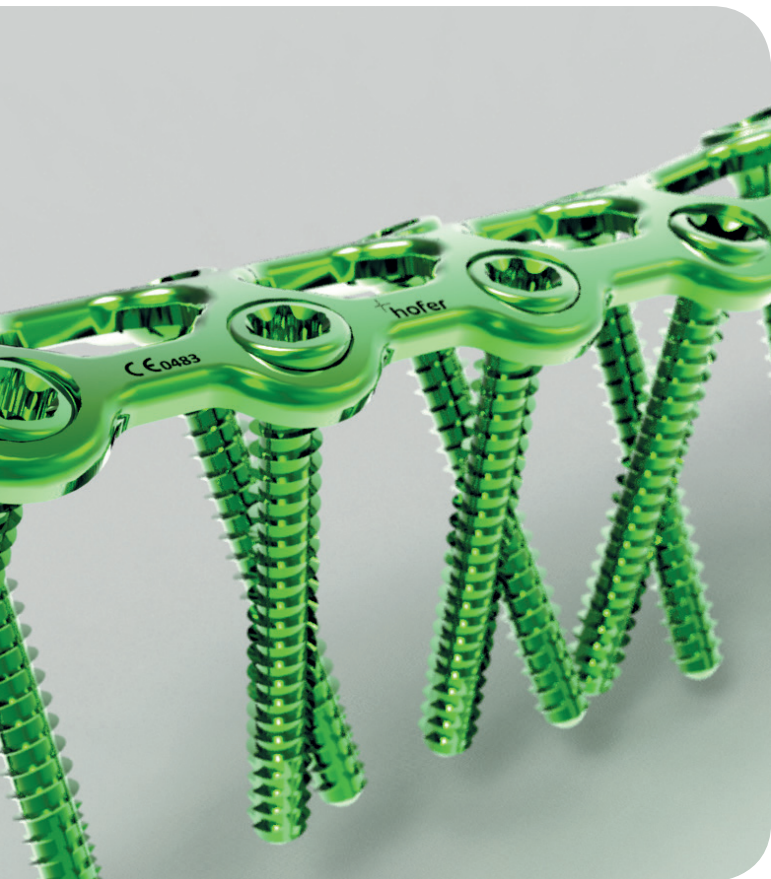


conic eXtreme:  
**INTEOS<sup>®</sup>** Hand System



# Advantages of the INTEOS® Hand System

The INTEOS® Hand System from Hofer-medical is characterised by a particularly easy implantation technique thanks to special technology and specially optimised instruments. **Fixed-angle & polyaxial** or **fixed-angle conic eXtreme** implantation techniques are as standard.



Co-ordinated, fully compatible system

- Two Plate Thicknesses: 0.8, 1.0 mm
- Four Screw Diameters: 1.5, 1.7, 2.0, 2.2 mm
- Two Screw Head Designs

Anatomical shaping of the plates possible with

- bending pliers

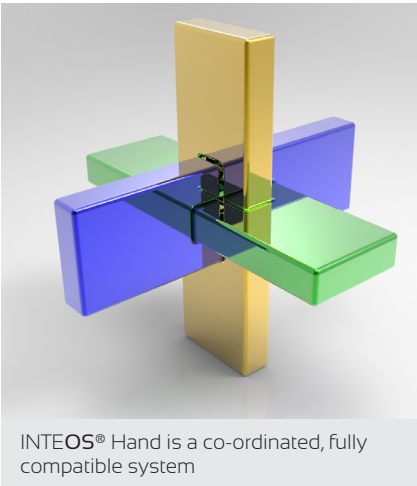
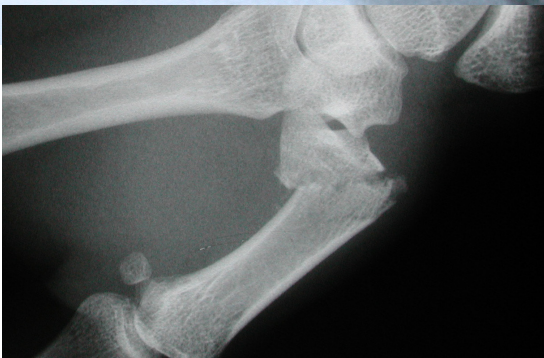
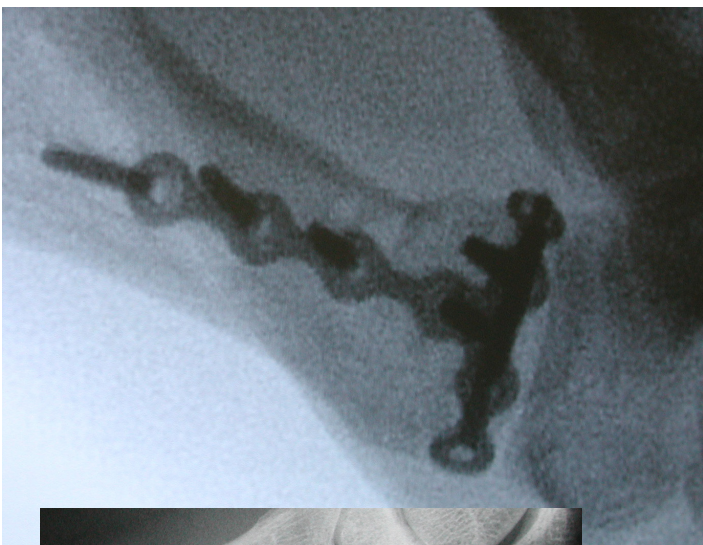
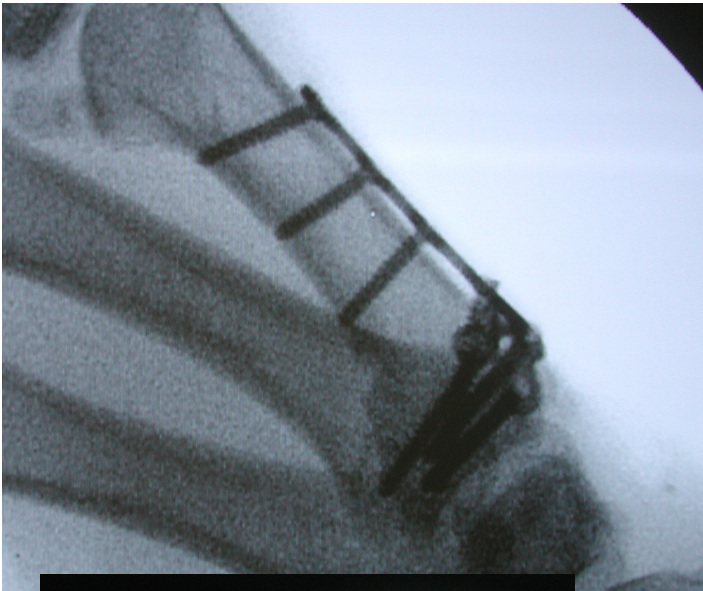
Plate - Screw connection

- multidirectional
- fixed-angle- conic eXtreme

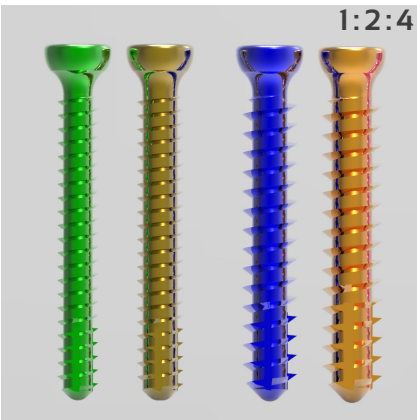
Screw Features

- minimal protrusion of screw head
- non-invasive screw tip
- „Stick Fit“ screws
- ForceDrive 6s

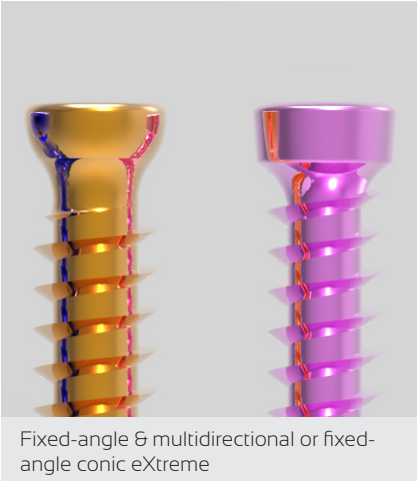
Variety of anatomically shaped plate designs for ease of use during an operation



INTEOS® Hand is a co-ordinated, fully compatible system



One system - two plate thicknesses - four screw diameters



Fixed-angle & multidirectional or fixed-angle conic eXtreme



**AUSTRIA**

HOFER GMBH & CO KG  
Jahnstrasse 10-12  
A 8280 Fürstenfeld

TEL: +43(0)3382/53388  
FAX: +43(0)3382/53093

office@hofer-medical.com  
www.hofer-medical.com

FN21826y  
UID ATU30764704



**GERMANY**

HOFER-MEDICAL GMBH  
Ruhrtalstraße 52-60  
D 45239 Essen

TEL: 0800-700 80 22 (innerhalb BRD)  
FAX: +49 201 56599 1069

office@hofer-medical.de  
www.hofer-medical.com

HRB24645  
UID DE290596924



**ITALY**

HOFER MEDICAL ITALIA S.R.L.  
Via della Giuliana, 66  
I 00195 Rome

Tel: +39 393 8950481  
FAX: +39 06 81151148

office@hofer-medical.it  
www.hofer-medical.it

RM-1454597  
UID IT13534721009



**POLAND**

HOFER GMBH & CO KG SPÓŁKA  
KOMANDYTOWA ODDZIAŁ W POLSCE  
Radkowska 9  
PL 57-402 Nowa Ruda

Tel.Kom.: +48603224112  
Fax: +48 748712273

office@hofer-medical.pl  
www.hofer-medical.com

REGON 141527293  
UID PL1070011771

## creating partnership

For us, a partnership is the result of a long and happy relationship in all areas of our work. Reliable bone healing for patients, optimal handling of the systems for surgeons and surgical personnel, as well as the simple preparation of the instruments, constantly strengthen this partnership.

For us, "creating" means more than just finding solutions in the form of innovative products.

It is the result of high standards, constant development, innovative products and excellent service for patients, surgeons and surgical personnel around the clock.

Please do not hesitate to contact us if you have questions about our company, our employees or our production methods.

Your HOFER medical solutions Team

vCard

